



MEDICAL SOLUTIONS



**ACCESSORIES FOR THE CARDIOVASCULAR LAB**  
ARMBOARDS | TABLE PADS | HEAD & NECK HOLDERS

# Head & Neck Holders

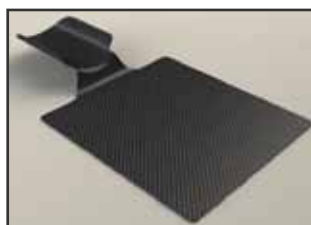


## Head and Neck Holder/Transfer Board

Part # 27014

Carbon fiber patient-weighted board with head and neck holder attached. Slides under table pad and patient. Permits cranial imaging and alternate positioning of patient. 20"W x 52.25"L, overall. Head holder 14.25"L x 3.33"H.

---



## Philips Magnus Head/Neck Holder

Part # 30567

Carbon fiber head and neck holder attaches to Philips table via matching hole pattern. Permits cranial imaging and alternate positioning of patient. 16.25"W x 30"L, overall. Head holder 12"L x 3.33"H.

---

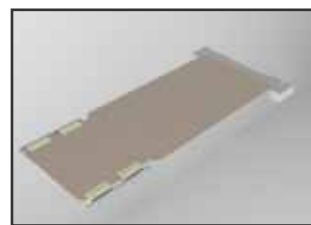


## Head & Neck Board

Part # 26478

Carbon fiber head positioning device. Durable radiolucent head holder designed to mount on table. Holds head in fixed position. 31.63"W x 20"L, overall. Head holder 14.25"L x 3.33"H.

---

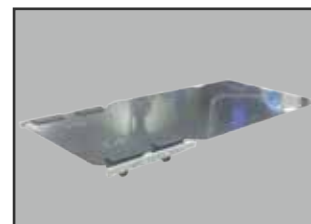


## Mayfield Extender with Rails for Toshiba Infinix

Part # 9416

Carbon fiber table extender. Allows attachment of Mayfield or Sugita head holders for cranial fixation during neurological procedures. Head section, 19"W x 20"L, Torso section, 22"W x 36.12"L, Includes two metric 9437 rails.

---

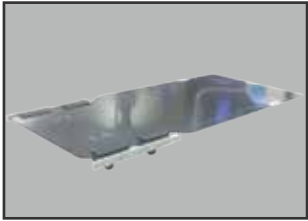


## Mayfield Extender with 20" rails for Philips 7340

Part # 30408

Carbon fiber table extender includes two 20" long rails for securing extender to tabletop. For imaging using Mayfield or Sugita head holder. Slides on with nylon guide rails. 22"W x 36.12"L.

# Table Extenders

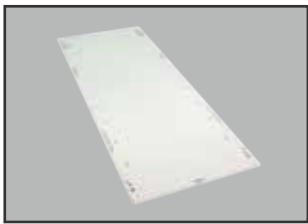


## **Mayfield Extender with 15" rails for Philips 7350**

Part # 29632

Carbon fiber table extender with two 15" long rails. Mounts securely during imaging with Mayfield or Sugita head holder. Provides square end on Neuro table. Slides on with nylon guide rails and is secured to the tabletop with nylon mounting blocks. 22"W x 36.12"L.

---

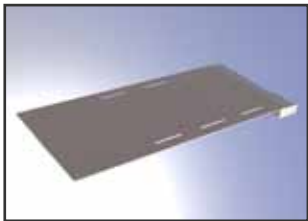


## **Hybrid OR Table Extender for Toshiba Infinix 880B**

Part # 9434

Carbon fiber table extender for 5-axis, hybrid Catheterization table. Permits head-to-toe and lateral tilt movement. Optional 9430, 9437, 9438 rails ordered separately. (see following page 'Detachable Rails' section for more info). 22"W x 51.33L.

---



## **Bariatric Table Extender for Toshiba 850B/870B**

Part # 9417

Carbon fiber table extender for bariatric procedural table. Dimensions: rectangular 27.56"W x 55.12"L. Optional 9424 Bariatric Straps provide added security.

---



## **Bariatric Table Extender with Strap Slots**

Part # 30576 - For Philips 7350

Part # 27975 - For Philips 7340

Carbon fiber table extender provides added width for bariatric patients. Slots allow 9424 Bariatric Straps to thread through table and around patient. Provides square end to neurological table. Attaches with nylon guide rails and mounting blocks, included. 27.56"W x 49.50"L. 9424 Bariatric Straps sold separately.

# Detachable Rails

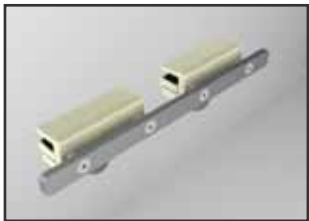


## **15" Detachable Rail, 3/8" x 1-1/8"**

Part # 9431

Removable accessory rail. Rail clamps onto any rigid flat surface up to 3/8" thick. Rail 3/8"W x 1-1/8"H x 15"L. Individual sites to determine number of rails needed.

---

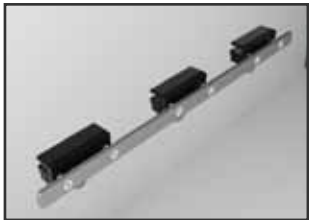


## **380mm Detachable Rail 9mm x 25mm**

Part # 9437

Removable accessory rail. Rail clamps onto any rigid flat surface up to 9mm thick. Rail 9mm W x 25mm H x 380mm L. Individual sites to determine number of rails needed.

---

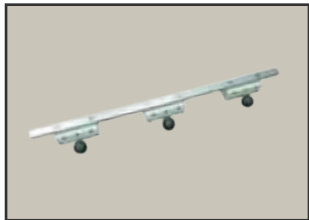


## **28" Detachable Rail 3/8" x 1-1/8"**

Part # 9430

Removable accessory rail. Rail clamps onto any rigid flat surface up to 3/8" thick. Rail 3/8"W x 1-1/8"H x 28"L. Individual sites to determine number of rails needed.

---

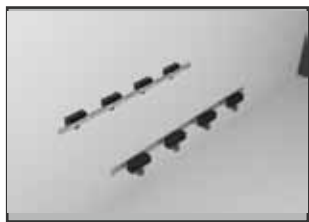


## **710mm Detachable Rail 9mm x 25mm**

Part # 9415

Removable accessory rail, Rail clamps onto any rigid flat surface up to 9mm thick. Rail 9mm W x 25 mm H x 710mm L. Individual sites to determine number of rails needed.

---



## **40" Abductor Accessory Rail Set 3/8" x 1-1/8"**

Part # 30465

Set of two detachable rails provides mounting area for chest abductors. Maximum table thickness 3/8". Rails clamp onto any rigid flat surface up to 3/8" thick. 3/8"W x 1-1/8"H x 40"L.

# Radial Access Kit



## **Radial Armboard** (*friction lock/rail mount*)

Part # 250

Carbon fiber, radial access armboard with rail mount. Friction lock engages with weight of patient's arm. Clamps onto most accessory rails. 5-1/2"W x 26"L.

---

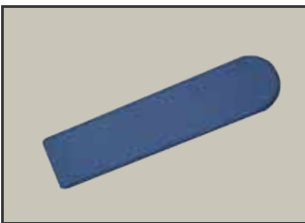


## **Radial Armboard** (*patient weighted/shoulder mount*)

Part # 254

Carbon fiber, radial access, patient weighted. (shoulder mount) armboard for radial access. Arm is 5-1/2"W x 27"L. Base is 18"W x 14"L. Overall length is 36".

---



## **Standard Armboard Pad**

Part # 255

For 250, 254, 26296 radial armboards. Engineered for patient comfort. Standard foam with HealthCare fabric cover. 2" thick x 6"W x 27"L.

---



## **Deluxe Armboard Pad**

Part # 258

For 250, 254, 26296 radial armboards..Reduces risk of pressure sores. Layered foam with HealthCare fabric cover and non-skid conductive bottom surface. 2" thick x 6"W x 26"L.

---



## **Shoulder L-Shape Armboard**

Part # 26296

Carbon fiber armboard slides under pad and patient. Friction lock secures position with weight of patient arm. Metal-free construction. Interlocking 'L' shape design for mounting two armboards during same procedure. Arm, 5-1/2"W x 27"L. Base, 18"W x 18"L. Overall length, 40".

## Misc.



### Prone Head Holder

Part # 30574

For Philips table profile. Head holder allows patient to rest chin on comfortable pad in prone position. Does not interfere with imaging.



### Table Pad for Philips 7340

Part # 30283

Reduces risk of pressure sores. Layered foam construction with HealthCare fabric cover and non-skid bottom surface. 2" Deep x 19.6"



### Table Pad for Philips 7350

Part # 30575

Matches neurology table profile..Reduces risk of pressure sores. Layered foam with Health Care fabric cover and non-skid bottom surface. 2" x 19.6" x 115".

*Additional system specific and custom table pads are also available. For more information contact a CFI sales representative.*



### Bariatric Strap Set

Part # 30577

Set of 3 nylon and Velcro straps for use with the Bariatric table extenders, 6" x 140"

### Prone Armboard

Part # 261 (Fits GE)

Part # 262 (Fits Siemens & Philips)

Part # 263 (Fits Toshiba)

Clear, one-piece unit slides over end of table for arm support during procedure.





**ZEROGRAVITY™**  
RADIATION PROTECTION SYSTEM



## Get your life back and give your back life

- 3-4 times more protection than a standard lead apron
- Dramatically reduces orthopedic strain
- Uncompromised range of motion

*"Using the ZeroGravity system, I leave a case without feeling sore or sweaty from the lead. Plus, knowing that my radiation doses are so much lower than before is a great relief."*

- David B. Wilson, M.D., FACS. -



[WWW.ZGRAV.COM](http://WWW.ZGRAV.COM)

Made in the USA

CFI MEDICAL SOLUTIONS HAS EMERGED AS A GLOBAL LEADER IN THE DEVELOPMENT & MANUFACTURING OF CUTTING EDGE MEDICAL ACCESSORIES. FOUNDED IN 1974, CFI HAS EXPANDED ITS OPERATIONS INTERNATIONALLY TO INCLUDE THREE MANUFACTURING FACILITIES, TOTALING OVER 200,000 SQUARE FEET OF FLOOR SPACE.

14241 Fenton Road  
Fenton, MI 48430

P. 810.750.5300  
F. 810.750.5310

[sales@cfimedical.com](mailto:sales@cfimedical.com)  
[www.cfimedical.com](http://www.cfimedical.com)