

ONI Positioning System

CFI Medical Solutions introduces an advanced Positioning System for the ONI OrthOne® 1.0T Extremity MRI Scanner. Why struggle to position your patients with the Standard ONI Chair? With CFI's System, you will achieve comfortable, accurate positioning every time for Foot, Leg, Knee, Elbow, Forearm, Hand and Wrist scans.



The ONI Positioning System is made of a combination of soft, resilient foams, and is coated in a durable vinyl coating for ensuring patient comfort, while holding up during repeated use. The teal color is designed to match closely to the existing ONI chair.

**Part # 414 - ONI Positioning Starter Kit - Set of 8 - Shown on the Following Page
(Parts are also sold individually)**

Optional Accessories include Arm, Leg & Knee Rests - Shown on the Following Page

**Part # 414 - Positioning Starter Kit - Includes Each of the Following 8 Items:
(Parts are also sold individually)**



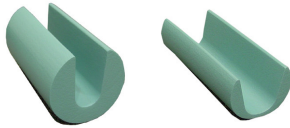
25350 - Back Pad - Slips over back of chair to provide additional padding.



25351 - Seat Pad - Straps to the seat of chair to provide additional padding.

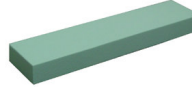


25352 - Leg Extension Pad - Slips over leg extension to provide additional padding.

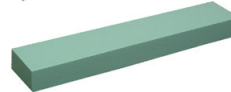


25356 - Large Wrist Pad
25357 - Small Wrist Pad
Provides support for wrist while positioned in the magnet.

25366 - Small Gap Pad



25367 - Large Gap Pad

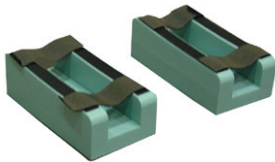


Used to fill gap between Seat Pad and Leg Extension Pad while chair is in seated position.

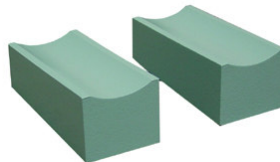


25368 - Transition Wedge
Used to form a flat surface between Back and Seat Pad when chair is in full recline position.

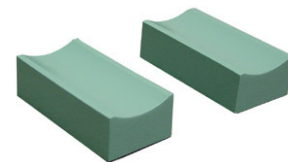
Optional Accessories - All Parts Sold Individually



25353 - Lower Arm Rests
(upside-down to show detail)



25354 - Upper Arm Rests #1



25355 - Upper Arm Rests #2

Arm Rests - Allow for proper positioning of the arms by raising them to the patient's natural height. Lower Arm Rests strap to existing arm rests on chair. Upper Arm Rests Velcro to Lower Arm Rests providing a surface for patient's arms.



25358 - Lower Leg Rest



25359 - Upper Leg Rest #1



25360 - Upper Leg Rest #2



25361 - Upper Leg Rest #3

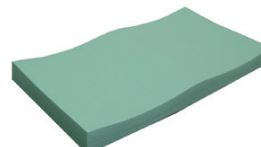
Leg Rests - Provides comfort for patient's "non-scan" leg during foot, leg & knee scans. Lower Leg Rest sits on floor, while combination of Upper Leg Rests are stacked on top until desired height and angle are achieved.



25362 - Lower Knee Rest



25363 - Upper Knee Rest #1



25364 - Upper Knee Rest #2



25365 - Upper Knee Rest #3

Knee Rests - Used in place of the chair's leg extension to provide support and comfort for patient's knees and legs. Lower Knee Rest sits on the floor, while one Upper Knee Rest attaches to top to achieve desired position.